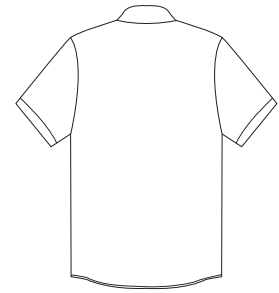


# Laides Short Sleeve Pocketless Snap Shirt



Front



Back

CS25

\* 4.25-ounce, 65/35 poly/cotton \* Reverse placket \* Squared bottom hem to be worn tucked in or out

**Care Instructions:**

Machine wash, tumble dry.

\*Meets IL50 specifications

**Finished Measurements in Inches**

Size	XS	S	M	L	XL	2XL	3XL	4XL
Chest	19.5	20.5	21.75	23.25	25.25	27.25	29.25	31.25
Length	25.75	26.25	26.75	27.25	27.75	28.25	28.75	29.25
Sleeve	30.5	31.25	32	32.75	33.5	34.25	35	35

**Colors**

White
-------

Please Note:  
Colors shown are approximate and for reference only. For closest match see PMS colors, or for exact match, returnable samples and grommeted samples are available.

Crown Height from bottom of side panel to edge of top button through eyelet.  
Width of front panel measured at bottom of panel.  
Circumference measured with velcro completely overlapped.

**Color Chart**

Base Color	White
Textile PMS	
General PMS	663 C